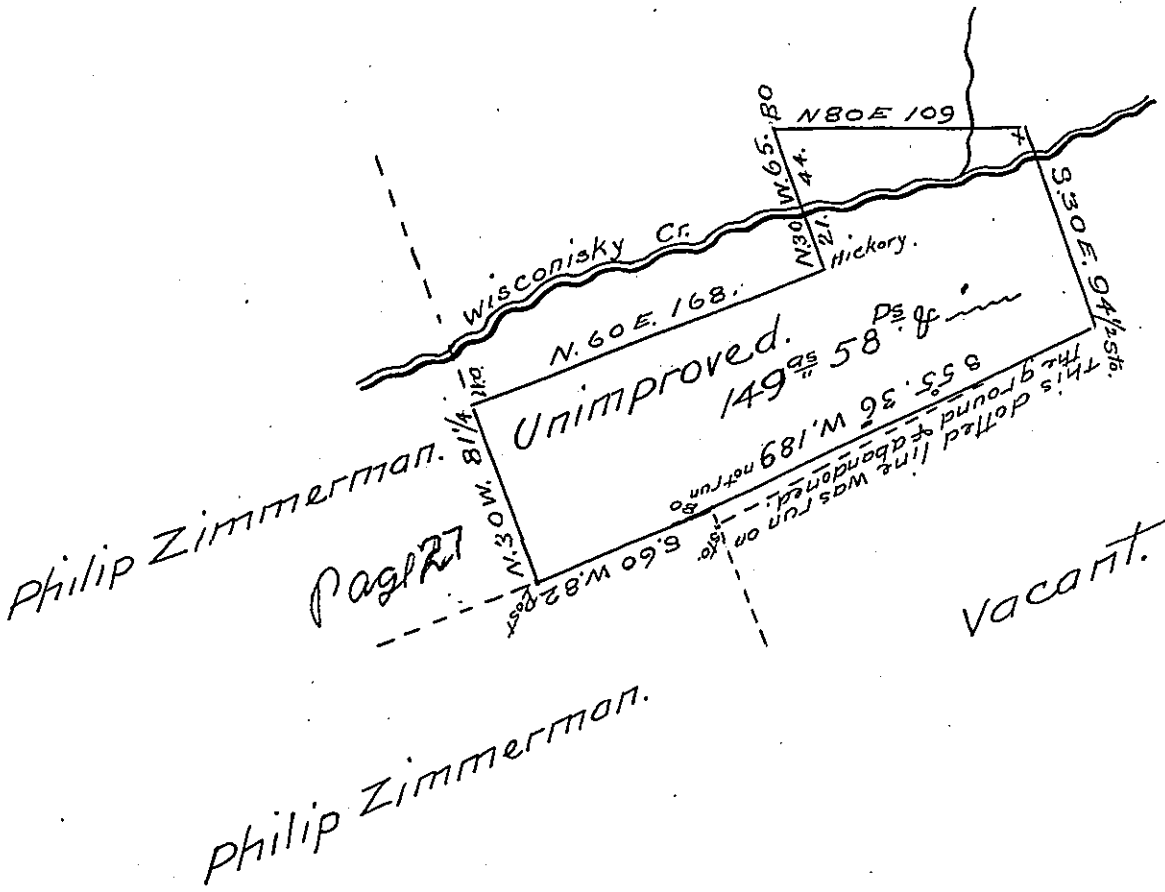


Claimed by Joseph Keffer.



Situate in Pinegrove Township Schuylkill county containing one hundred and forty nine acres and fifty eight perches and the allowance of six Per Cent. Surveyed on the 28th day of October 1825 in pursuance of a Warrant dated the 28th day of May 1825 granted Daniel Hain.

To Gabriel Hiester Esquire } F. Lauderbrun
 Surveyor General of Penna. } Dep. Sur. Schuylkill. —

The dotted line was ran on the ground and abandoned in consequence of the survey having a greater surplus by 78 square perches than is allowed by law, and that excess cut off by the line on paper 5.55.36 W. 189 perches.

F. Lauderbrun D.S.

IN TESTIMONY that the above is a copy of the original remaining on file in the Department of Internal Affairs of Pennsylvania, made conformably to an Act of Assembly approved the 16th day of February, 1833, I have hereunto set my Hand and caused the Seal of said Department to be affixed at Harrisburg, this Thirteenth day of March 1905.

Loac R. Brown
 Secretary of Internal Affairs.